

DEUS AUTEM EST IN FIDE



FULL TIME PROSPECTUS 2023/25



CONTENTS	PAGE
Welcome to London School of Tailoring-----	8
LEVEL 3 DIPLOMA IN TAILORING COURSE-----	9
Teaching and learning resources-----	10
Tailoring pathways offered on the course-----	11
Units offered under the different pathways-----	12
Explaining the units offered under the different pathways	13-17
Course Assessment, progression-----	18-20
Fees, application procedure-----	21-29
Summer Jacket sewing course-----	30
Examples of teaching and learning resources used on the course-----	31-49
Gallery of students works-----	50-51

WELCOME TO LONDON SCHOOL OF TAILORING



London School of Tailoring, founded by Sandra Kotei 2009, formerly of 19 Savile Row, now located in Southwest of London, Battersea to transfer her knowledge and skills acquired from Saville Row Tailors and industry professionals, such as Francis Redican, Phillip Branch, Colin Stovel, Richard Fitz-John, Phillip Mead, Edward Thornton, et al.

LEVEL 3 DIPLOMA IN TAILORING COURSE

The school offers comprehensive technical training programme at **Level 3 Diploma in Bespoke, Couture and Production tailoring, as a two-year course**. It provides students with core technical knowledge, understanding and skills in garment development and manufacture within the above listed disciplines.

The course was developed by Sandra Kotei in January 2023 is equivalent to 2 A-Levels. It has been further mapped to meet the requirements of the National Occupational Standards and therefore mapped to the Bespoke Cutting and Tailoring suite and Apparel Manufacturing Technology Suite. Additionally, the course has also been mapped to the Garment Maker Apprenticeship Standard and aims to work towards securing a UKFT Benchmark in the future.

LOCATION

The course located in Southwest London, bus ride away from the Design, V&A Museums, Savile Row, Mayfair, Bond/Sloan Streets, boasts several designer, traditional tailoring houses/ shops.

TEACHING AND LEARNING



At the London School of Tailoring, we pride ourselves placing emphasis on individual learning with our clear and concise teaching and learning resources written from students' viewpoint. We ensure one-to-one hands – on experience, as we offer 4 students per lesson to ensure best possible impact. Students are guided to view and execute all practical development of the garment from a three- dimensional perspective.

TEACHING AND LEARNING RESOURCES



STUDENT USING SCHOOLS RESOURCE TO REALISE COURSE WORK



STUDENT MODELLING STANDARD SIZE 12 TROUSER PROJECT

THE TAILORING PATHWAYS OFFERED ON THE COURSE

The course offers a choice of four pathways of tailoring i.e., Bespoke, Couture, Men's, or Women's Production Tailoring, and upon completion, students will receive a **certificate of diploma in the studied discipline listing the achieved competences.**

COURSE ASSESSMENT

Assessment on the course is measured through an internal continuous formative and summative assessments by course tutors and externally moderated by Royal College of Arts EX HEAD OF MENSWEAR DEPARTMENT (RCA), Menswear designer & tailor.

BESPOKE	COUTURE	MEN'S PRODUCTION	WOMEN'S PRODUCTION
			

Units offered under the different pathways

BESPOKE TAILORING UNITS

M101: RESEARCHING MEN'S TAILORED GARMENT HISTORY & DESIGNING
M201 BASIC TROUSER, WAISTCOAT, JACKET BLOCK DRAFTING
M202 BASIC TROUSER, WAISTCOAT, JACKET BLOCK GRADING AND ADAPTATION.
M203 BLOCK MANIPULATION AND DRAFTING FOR BESPOKE
M204 RETAIL BESPOKE CUTTING FOR ASSESSMENT
M301 HANDCRAFT TAILORING TECHNIQUES
M302 BESPOKE GARMENT SEWING

COUTURE TAILORING UNITS

W101: RESEARCHING WOMEN'S TAILORED GARMENT HISTORY AND DESIGNING
W201 BASIC SKIRT, TROUSER, WAISTCOAT, JACKET BLOCK DRAFTING.
W202 BASIC SKIRT, TROUSER, WAISTCOAT, JACKET BLOCK GRADING, ADAPTATION.
W203 BLOCK MANIPULATION AND DRAFTING FOR COUTURE
W204 RETAIL COUTURE CUTTING FOR ASSESSMENT
W301 COUTURE TAILORING TECHNIQUES
W302 COUTURE GARMENT SEWING

MEN'S PRODUCTION TAILORING UNITS

M101: RESEARCHING MEN'S TAILORED GARMENT HISTORY & DESIGNING
M201 BASIC TROUSER, WAISTCOAT, JACKET BLOCK DRAFTING
M202 BASIC TROUSER, WAISTCOAT, JACKET BLOCK GRADING, ADAPTATION.
M205 BLOCK MANIPULATION AND ENGINEERING FOR PRODUCTION
M206 PROTOTYPE DEVELOPMENT FOR ASSESSMENT
M303 PRODUCTION TAILORING TECHNIQUES
M304 PRODUCTION GARMENTS SEWING

WOMEN'S PRODUCTION TAILORING UNITS

W101: RESEARCHING WOMEN'S TAILORED GARMENT HISTORY AND DESIGNING
W201 BASIC SKIRT, TROUSER, WAISTCOAT, JACKET BLOCK DRAFTING.
W202 BASIC SKIRT, TROUSER, WAISTCOAT, JACKET BLOCK GRADING, ADAPTATION.
W205 BLOCK MANIPULATION AND ENGINEERING FOR PRODUCTION
W206 PROTOTYPE DEVELOPMENT FOR ASSESSMENT
W303 PRODUCTION TAILORING TECHNIQUES
W304 PRODUCTION GARMENTS SEWING

EXPLAINING THE UNITS STUDIED UNDER THE DIFFERENT PATHWAYS

UNIT 101 LADIES' AND GENTS TAILORED GARMENT HISTORY RESEARCH AND DESIGNING:

This unit specifically researches men's and women's tailored garments, develops knowledge and understanding in the evolution of tailored garments and how history, developments has impacted on contemporary tailoring. Student's will research and record information on history of tailoring to gain an insight into men's/women's tailored garments over the decades which will form the basis of the student's understanding of contemporary and historical fabrics, new developments, tailoring practices, and the creation of tailored garments. An understanding of the technical processes of historical practitioners' work will contribute to the student's practical skills and enhance their own tailoring development. With the research as resource, students will design pieces for final assessment, by identifying and profiling the market, or contemporary customer, i.e., bespoke/couture/fashion/luxury market, made-to-measure, ready-to-wear, and using past and current trends, forecast future trends, highlighting how the historical clientele, new development in fabric technology, production techniques and processes, etc, has aided this process.

UNIT 201 BASIC BLOCK DRAFTING:

The basic block drafting unit will develop knowledge and the specialist skills necessary for drafting the basic skirt, trousers, waistcoat, and jacket block patterns to standard body measurement–size chart. Examines garment sizing, profile the customer and brand base of high -end tailoring, to facilitate appropriate response to pattern cutting briefs set within an industrial context and an identified market.

UNIT 202 BASIC BLOCK GRADING AND ADAPTATION:

Basic block grading and adaptation examines the underlying theory of grading and adapting patterns to fit the individual client, such as catwalk model, individual size, and shape meeting the requirement of work ticket or working specification. Investigation into the human anatomy, growth, muscle developments and physical proportions is required to gain an understanding of the figure shape. Individual body measurements are taken, compared to the standard size chart to identify differences in figure measurements and size chart. Graded basic block are adapted according to individual body measurement.

UNIT 203 BESPOKE/COUTURE BLOCK MANIPULATION:

Block manipulation for bespoke garments prepares students professionally, to develop the specialist's skills necessary in manipulating the tailored skirt, trouser, waistcoat, and jacket to industry standards. Students' will demonstrate the ability to produce styles from block patterns by manipulating to achieve requirements of work ticket or specification.

UNIT 204 RETAIL BES/COUTURE CUTTING ASSESSMENT:

Retail bespoke cutting examines underlying theory of developing garments to fit the individual shape to meet requirement of a work ticket. Investigation of the human anatomy, growth, muscle developments and physical proportions is required to gain an understanding of the figure shape. Individual body measurements are used to carryout pattern adaptation for assessment.

UNIT 205 PROD BLOCK MANIPULATION, ENGINEERING:

Block manipulation/engineering prepares students professionally, to develop the specialist's skills necessary to produce styles from block patterns and cut all the necessary pieces such as linings, interlinings, and re-adjust the pattern pieces with the minimum change to facilitate improved fabric utilization applying different seam allowances to meet specification requirements.

UNIT 206 PROTOTYPE DEVELOPMENT FOR ASSESSMENT:

The prototype development unit further develop the skills and knowledge acquired from previous units enabling students to accurately cut patterns from working drawing/ clients order to realise a garments for assessment. Students will develop the knowledge and skills to select and alter pattern blocks to produce a full-scale pattern whilst considering, the potential and limitations of the working specification and material. Students will develop the skill required for prototype development, use materials appropriately and economically using lay planning and material costing and evaluate the potential and limitations of techniques and processes used in prototype development.

UNIT 301 HANDCRAFT/COUTURE TAILORING TECHNIQUES:

The handcraft/couture tailoring techniques focuses on developing the specialist skills necessary for sewing a tailored garment. Students specifically observe **health and safety rules in the sewing room** and master the use of **tailoring equipment, machinery, and tools**.

They will examine the **properties and characteristics of different fabrics and fibres**, weave, trimmings. It equips students with appropriate knowledge of fabric and its suitability to the sewing techniques used in the construction of tailored garments. Emphasis is placed on the acquisition of the basic practical skills required in the sewing of the selected fabrics, such as, hand stitches, machine sewing seams, and pressing, fundamental to tailoring that must be applied with precision, to high standards within realistic time constraint in the sewing of the **tailored skirt, trousers, waistcoat, and jacket**.

UNIT 302 BESPOKE/COUTURE GARMENT SEWING:

The **handcraft/couture tailoring skirt/trousers sewing** focuses on developing the specialist skills necessary for sewing the listed tailored garments to the standards appertaining to Savile Row or couture Houses. The emphasis will be on the realisation of handcraft/couture tailored trouser/skirt through the transfer of the basic practical skills learnt from the previous unit: hand sewing, machining, and pressing which are fundamental to the tailoring profession. Concentrating on the careful assembly of garment parts such as: **skirt or trouser** pockets, zip/button, **pockets, belt loops**, fastening, lining, and waistband to inform the complete **skirt or trouser** sewing.

The **waistcoat sewing** will develop the specialist skills necessary for sewing a tailored waistcoat. Specifically applying the skills learnt in previous unit, construct the tailored waistcoat inner shell i.e., **interlining**, canvassing the waistcoat front and **inserting** the **outer pockets**. Applying the front facing and lining, then bagging out the waistcoat back. Finishing with **hand worked buttonholes** and **top** and **final pressing**.

The **tailoring** of the **jacket** consolidates the skills acquired in the tailoring techniques to the making of handcraft tailored jacket inner shell i.e., **interlining**, padding the chest piece, canvassing the jacket front, and **inserting inner** and **outer pockets** of the Jacket, application of the jacket facing, setting of the under and top collar, sleeve insertion and the application of shoulder pad and sleeve head wadding and an understanding of the sequence of assembly used in the jacket sewing process through the sewing of samples, and the realization of a tailored jacket. Finishing with **hand worked buttonholes, top** and **final pressing**.

UNIT 303 PRODUCTION TAILORING TECHNIQUES:

Production tailoring techniques focuses on developing specialist technical skills necessary for production tailored

garments. Students will develop and demonstrate the use of appropriate **equipment, tools, machinery, and safety.**

They will investigate, develop knowledge, understanding, vocabulary and show awareness of the properties and characteristics of different fabrics and fibres and their suitability to tailored garment, the manufacturing equipment and production processes to achieve this. **Focusing on the understanding of the hand and machine stitching processes and assembly methods used in mass production, ready-to-wear, made-to-measure manufacturing or small sample room production of sample garments depending on the level of complexity of the garment and proceed to develop the basic skill in relation to the manufacturing processes, to gain an understanding of the sequence of operations used during the production process through production of the listed component parts.**

UNIT 304 PRODUCTION GARMENTS SEWING/REALISATION:

Production tailored garment manufacture focuses on the transfer of skills from the production tailoring techniques in the manufacturing of the **skirt, trouser, waistcoat, jacket.** Students will select and use appropriate industrial machinery, equipment, and hand tools to achieve quality production standards. Students will be expected to extend their skills in the planning of the production process, develop a clear understanding of the planning and sequence of operation used during the production process, paying particular attention to effectiveness in terms of time management. Students will research a variety of garments to develop their skills and understanding of the production process. They would adhere to the health and safety regulations associated with the equipment and materials in use, follow appropriate risk assessments procedure and relevant COSHH guidance.

Course Assessment:

Assessment on the course is through a range of assignments testing students' ability to apply knowledge and skills, gained, oral, written questions, and answers. Students will engage in directed self-study - (independent study by the student after direction received in taught time) practice and build upon knowledge and skills gained in the taught elements of the course. Progress on the course will be monitored through series of tutorials, formative and summative assessments. All units on the course are internally assessed and externally moderated. Students provide evidence to prove they have achieved each of the assessment criteria listed for that unit. Evidence such as practical activity observation, oral or written questions and answers, notes, learning journal, recorded or photographic evidence.

Progression

On successful completion, of course you will be equipped with the skills and understanding that is required to apply for employment in industry with the support of LST.

Golden Shears and Beyond

Students who successfully completes the two-year course and meet entry requirements, will be entered into the prestigious Golden Shears Competition where student's get the chance to win a cash prize and showcase their garments to the higher echelons of the tailoring industry - possibly leading to a job offer or internship.

Alternatively, further study at degree level will open additional career opportunities, including employment in costume, fashion design or self-employment. London School of Tailoring will also support you to apply to intern or work with design or tailoring houses.

GOLDEN SHEARS FINALIST INVITATION



Golden Shears Competition
Merchant Taylors' Hall, 30 Threadneedle Street, London, EC2R 8JB

Chairman: Simon Cundey Vice Chairman: Robert Bright
Email: goldenshears@merchant-taylors.co.uk

Dear Laura,

Congratulations! On behalf of myself and the Golden Shears Committee, we are delighted to confirm your entry has been selected for the 2017 Golden Shears Finalists' Catwalk Show, on Monday 20th March at the Merchant Taylors Hall, London.

The standard of entry this year was particularly high and the quality, design and style of your garments were excellent. The collective marks awarded by the Technical Judging panel meant that your entry was taken forward to the Catwalk Final stage.

You will be contacted by Isabel Crawshay, our PR Company, at LM Communications, in the coming weeks for a briefing on your background, training and interest in tailoring. Her email is isabel@lm-communications.com.

Your garments patterns and design work are now being held at Merchant Taylors Hall, 30 Threadneedle Street, London EC2R 8JB and our stylist working on the event, Ms Harriett Jagger, will contact you directly for a brief consultation in advance of the Catwalk Final.

We would also be very pleased if you could join us at the Golden Shears Finalists' Catwalk Show at 6pm on Monday 16th March, at Merchant Taylors' Hall. In addition, entrants will need to be at the Hall at 2.30pm that day to receive their certificates and be photographed with the Master of the Merchant Taylors' Hall. Please also ensure you are available to collect your garments at the end of the event.

As a finalist you are entitled to 2 complimentary tickets and 1 discounted ticket to the event. Any addition tickets will be sold on a first come, first served basis. Please contact Abbie Shute ASHute@merchant-taylors.co.uk or on 0207 450 4453 with all ticket requests and enquiries.

Again, congratulations for reaching the final stage of the 2017 Golden Shears Competition and we look forward to seeing your creation on the catwalk!

Yours sincerely,

Simon Cundey
Chairman



2013 Golden Shears finalists from the school.



2017 Golden Shears finalist, wearing her own creation



Course fees

The yearly fee of **£3,242.50** payable at **£500** initial payment and 10 monthly instalments of **£274.25**.

Payment of Fees by monthly arrangements has been put in place due to the financial cost of living and only acceptable by standing order arrangement and payment of initial sum made upon acceptance on to the course.

Additional Costs

Additional cost of **£250** for teaching and learning resources is payable per year.

No refund is given to any of the fee within six weeks of the course commencing, except in extenuating circumstances. The fee must be paid directly into London School of Tailoring's bank account or listed payment methods.

Our bank details are as follows: Bank name: Barclays Bank,
Account name: The London School of Tailoring
Account Sort Code: 20-45-45, Account Number: 00876607.

Selection process

Selection is based initially on academic qualifications and or previous experience, individual's personal statement and motivation.

Application Procedures

To apply, fill in the application form at the back of prospectus: Please ensure you include all relevant information with your application, since failure to do so may delay your application.

1. Evidence of commitment and suitability for the course, including a 1 - page essay (personal statement) describing what your expectations are, your objectives beyond the course, and how the course will serve those objectives.
2. Appropriate examples of work will be beneficial but not necessary. It is acceptable to submit photographs of any work in this area.

3. Records of educational attainments at secondary school level, or beyond or photocopies of certificates of attainment and/or qualifications.

Entry Requirement

While students will not be expected to have prior knowledge of garment production but expected to demonstrate commitment to working in tailoring. Reliability, punctuality and 100% attendance are expected on the course, just as they are when working in the tailoring company.

Prospective individuals should be:

- 18+, four GCSE at grades A – C, including Math's, English.
- Have IELTS level 5.5 or equivalent if English is not the first language.
- An interest in tailoring.

Applications from students with a wide range of experience and mature students are welcomed.

APPLICATION FORM

Course Detail-----

Personal details (This name will go on your certificate, please print clearly)

Title: (Mr./Mrs./Miss/Ms.) -----

Family Name-----First name(s)-----

Sex: Female----- Male-----

Address-----

-----Postcode-----

Home Tel.-----Mobile-----

Email-----

Nationality-----Date of birth-----

Age-----I am over 19 years old-----

Next of Kin-----

Address-----

-----Postcode-----

Mobile-----Email-----

PREVIOUS EDUCATION OR EMPLOYMENT (For reference purposes if you are coming directly from school or college, please give the name and address of your most recent educational establishment or provide your most recent employment details).

Name of school/college/employer-----

Date attended from-----to-----

Address-----

-----Postcode-----

Email-----Tel-----

Reference name-----

Position-----

ADDITIONAL SUPPORT NEEDS (The School is committed to improving its provision for people with disabilities. If there is anything that might affect your learning that you think we should know please indicate below)

Visual Impairment		Mental Health Difficulties	
Hearing Impairment		Numeracy Difficulties	
Physical /Mobility Difficulties		English Language Needs	
Learning Difficulties		Dyslexia	
Other			

MEDICAL INFORMATION

This information will be kept confidential. If you answer yes to any of the questions below, please attach a separate page describing the condition and the treatment you receive.

Are you currently under medical treatment, for any reason?

No/Yes.

Are you currently being treated by a psychologist or physician for an emotional nervous or mental disorder? No. Yes.

Do you have any allergies dietary restrictions? No. Yes

QUALIFICATIONS

Subject	Level	Awarding Body	Grade	Date

HOW DID YOU FIND OUT ABOUT THIS SCHOOL?

On Course Guide	Newspaper/Magazine	Internet
Careers Teacher	Word of mouth	University
Other (Please state)		

YOUR AGREEMENT

I agree to London School of Tailoring processing data contained on this form, or other data, which may be obtained, from me or other people, whilst I am a student. I agree to the processing of such data for any purposes connected with my studies or my health and safety whilst on the premises or for any other legitimate reason.

APPLICANTS SIGNATURE-----Date-----

PERSONAL STATEMENT (Please tell us in 250 words about your interest in tailoring, and why you have applied for the course).

FOR EMPLOYER SPONSOR DETAILS (For students who are being sponsored by employers, please fill in the details below)

Company-----

Department-----Contact-----

Address-----

Tel.-----Email-----

STATEMENT OF ACCEPTANCE AND WAIVER

I understand that in committing myself to London School of Tailoring course, I am accepting the following responsibilities:

1. This is a technical and professional training programme: - I am therefore responsible for attendance at classes and scheduled visits. Missed classes will mean lower grades, and not meeting course criteria.
2. I am responsible for purchasing any materials required to complete any project I may be given on the course.
3. I am responsible for behaving as a group member, fitting in, and considering group needs.
4. I am responsible for co - operating with Course Director and Tutors, paying attention to announcements, and recognizing that everyone has needs for help and support.
5. I have fully described any health and physical or psychological problems I may have on the application form.
6. I understand that the price charged for the course pays for the whole course. It cannot be refunded for any parts of it that is miss.
7. Dates, schedules, and details, given in good faith, based on information available at the time of announcement, are subject to change and revision.

Student signature

I hereby certify that all the information on this application is correct.

Signature-----Date-----

Disclaimer

Although every care has been taken to present accurate information at the time of going to press, occasionally the school will find it necessary to make alterations. For example, the school reserves the right to make changes to fees.

The information given on the website describes the courses currently run by London School of Tailoring. Despite our care, course changes may have been introduced after publication, and it's London School of Tailoring's policy to review its provision of courses as well as the performance and content of the courses. Prospective students should be aware of this and are invited to verify details at interview or by enquiry at the school.

This information is issued as a general guide to London School of Tailoring's courses; it forms no part of a contract. London School of Tailoring reserves the right to make such changes as may be appropriate for reasons of operational efficiency or due to circumstances, including industrial action, beyond its control.

FOR OFFICE USE ONLY

STUDENT NAME:
COURSE NAME AND UNIT NUMBERS:
COURSE DURATION:
COURSE FEES:
PAYMENT ARRANGEMENTS:
NOTES

Please scan and email or send all the above to:

London School of Tailoring
24A Battersea Business Centre
99-109 Lavender Hill
London SW11 5QL

Contact: Sandra on mobile: +44 (0) 7393 677 758

Landline: +44 (0) 203 627 8754

Email: admin@londonschooloftailoring.co.uk

Email: Sandra.k@londonschooloftailoring.co.uk

Website: <http://londonschooloftailoring.co.uk/>

Location

London School of Tailoring is located at 99-109 Lavender Hill within the Battersea Business Centre.

Nearest tube: Vauxhall or Clapham Common - Northern line.

Mainline station: Clapham Junction and 5 minutes' walk-up Lavender Hill to the Studio.

Buses: 156, 87, 345, or 77 from Clapham Junction station to Tipthorpe Road.

The information, which describes this course, was accurate at the time of publication. London School of tailoring reserves the right to amend, withdraw or cancel any part of the programme or costs at any time.

SUMMER JACKET SEWING COURSE

4 WEEK BESPOKE/COUTURE JACKET SEWING

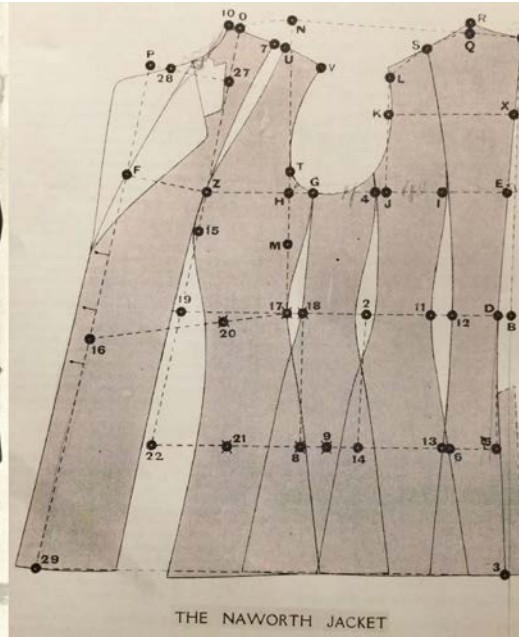
Construction techniques: handcraft/couture tailored jacket
This course will develop the skills in the use of specialist equipment and techniques prior to production of a handcrafted tailored jacket. You will select and use appropriate specialist equipment and techniques in the production of a bespoke or couture jacket. You will produce a handcraft tailored jacket to industry standard in the order of assembly requirements.

- Hand stitching and pressing methods for jackets.
- Introduction to the lockstitch and over lock machines
- Jacket body canvass preparation
- Jacket pocket sewing
- Jacket body canvassing
- Jacket fastenings button and buttonhole sewing
- Jacket body and sleeve cuff vents
- Jacket collar, lapel sewing, completion and pressing.

Assessment: The assessment method used on the course is based on Portfolio of Evidence.

SOME OF THE LEARNING RESOURCES
USED AT THE SCHOOL TO ENSURE
THOUROUGH UNDERSTANDING OF
THE TAUGHT PROCESS.

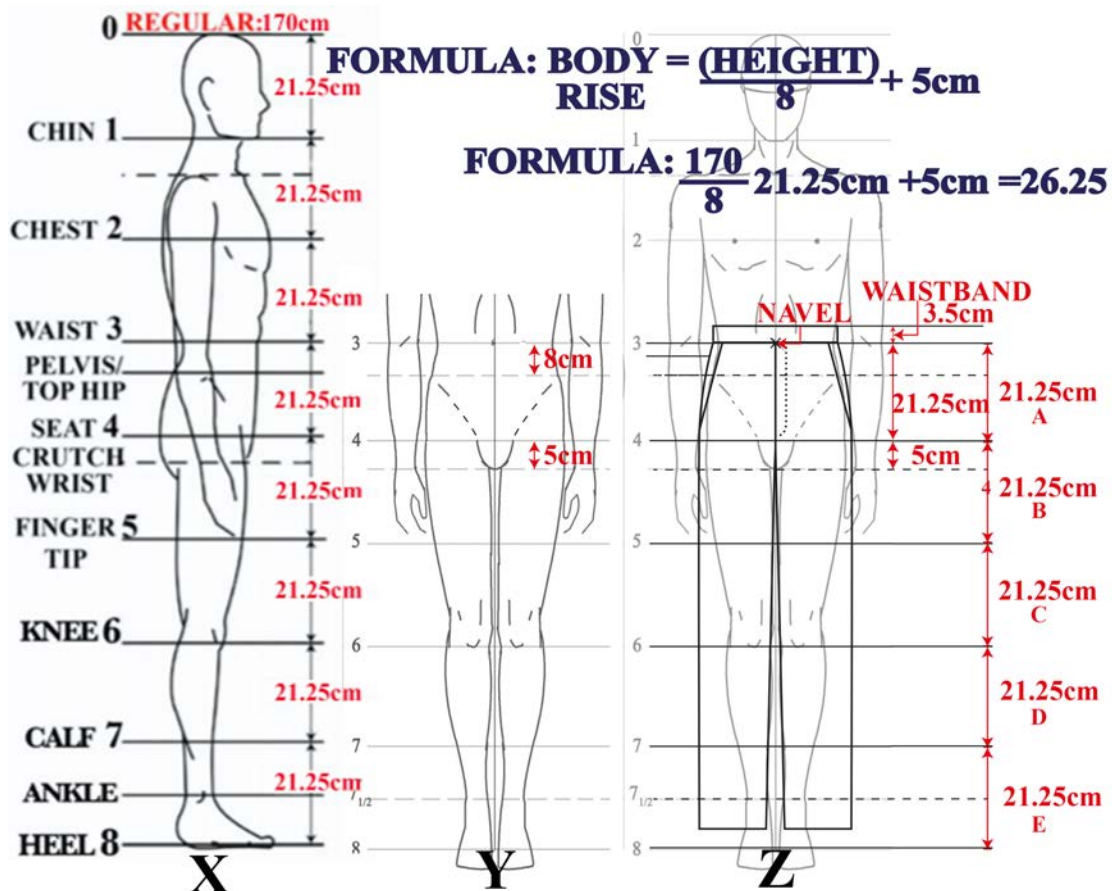
Researching ladies' garment history



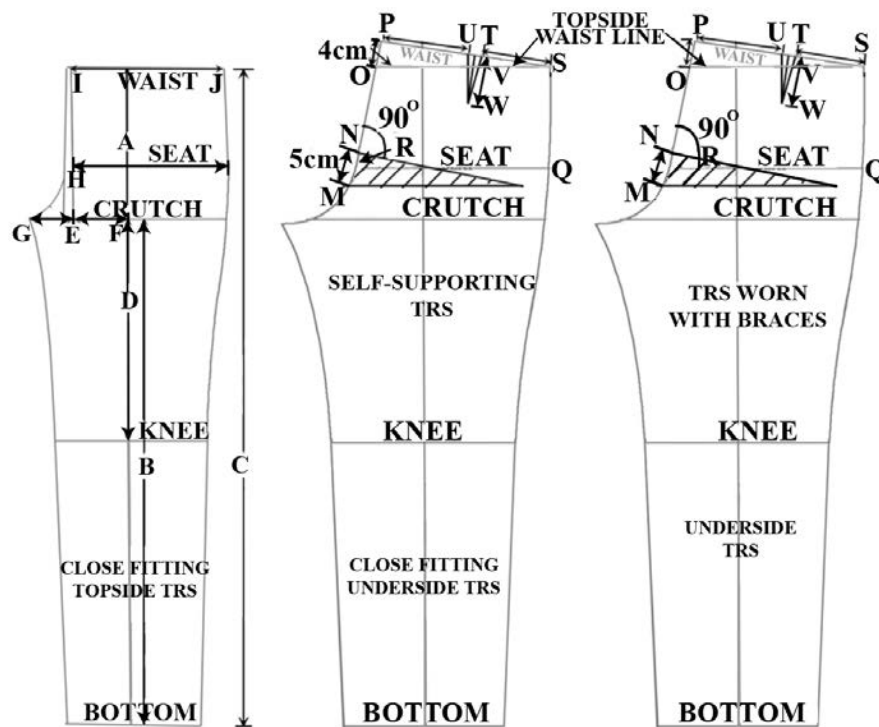
Researching gents garment history



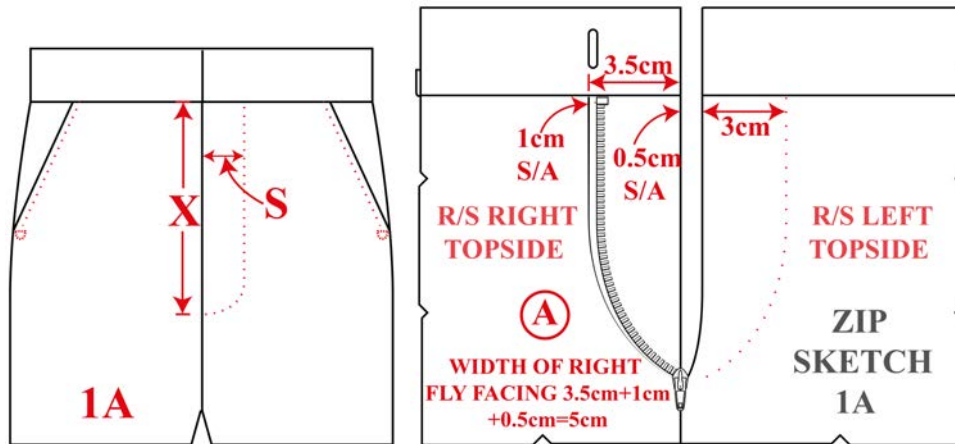
USE OF PHYSICAL PROPORTIONS IN TROUSER BLOCK DRAFTING



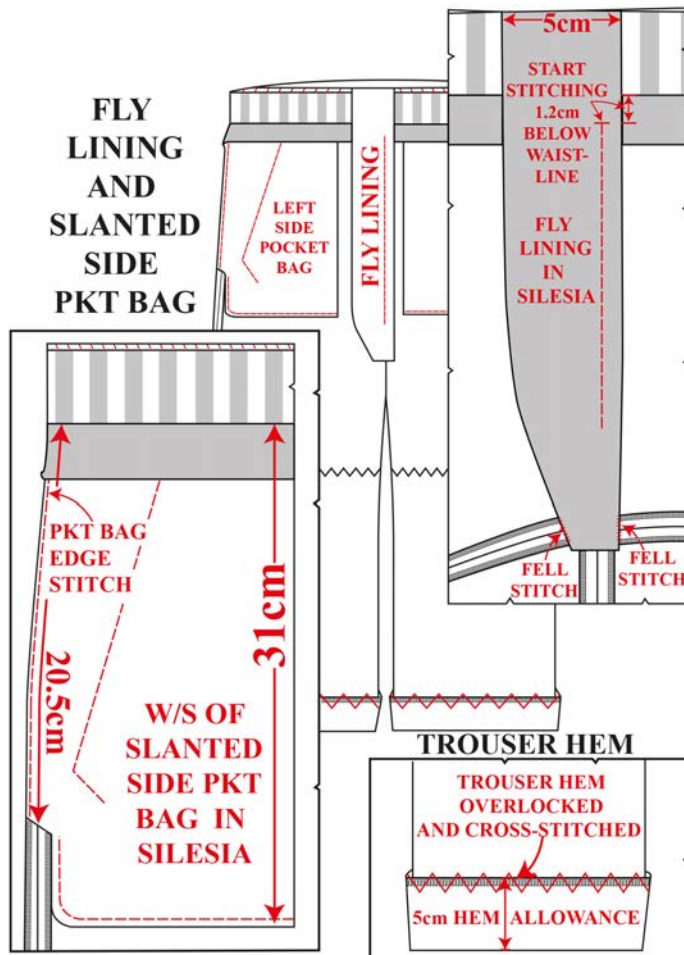
MEN'S TROUSER BLOCK DRAFTING



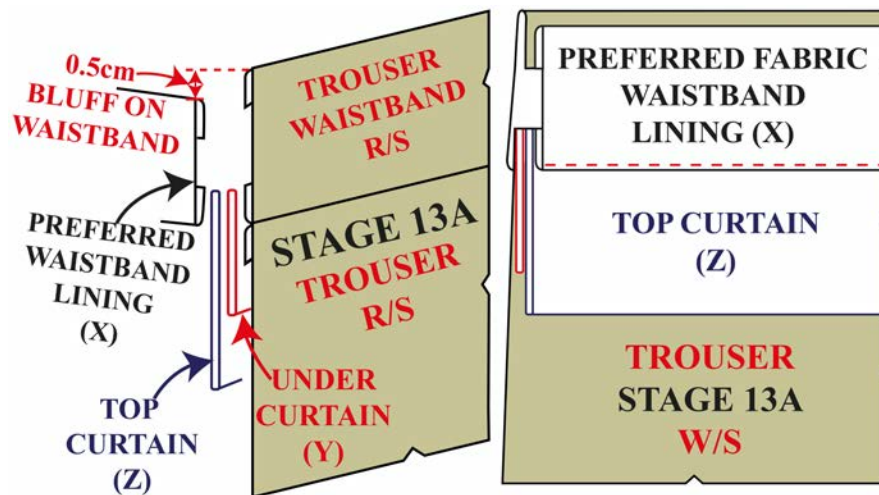
ANALYSING THE TROUSER FOR FLY CUTTING



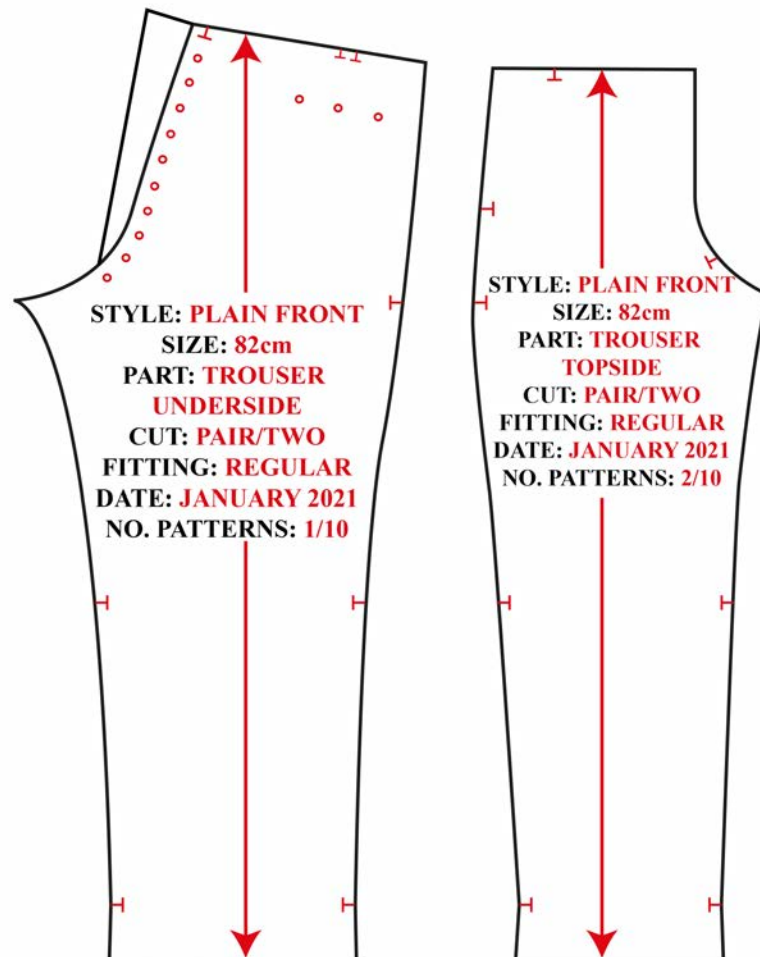
WRITING MEN'S TROUSER MAKING SPECIFICATION



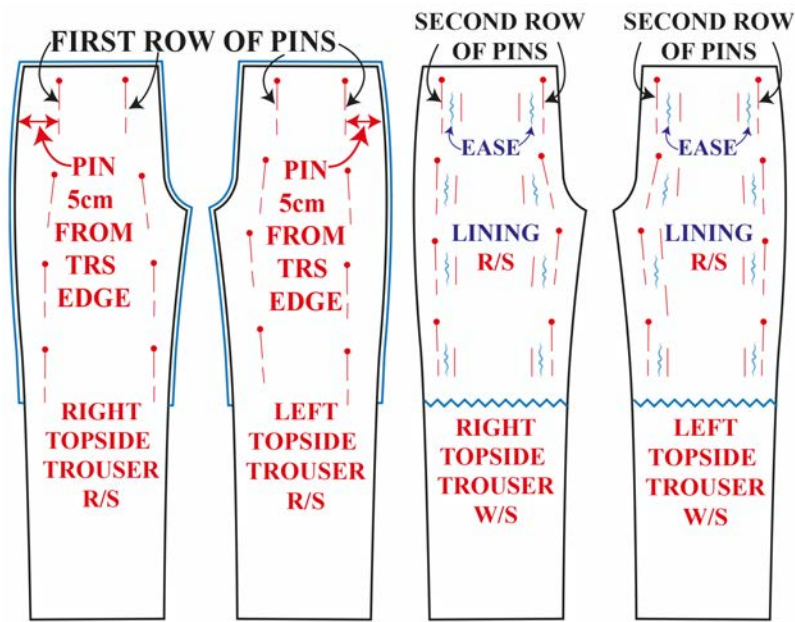
PRODUCTION TROUSERS WAISTBAND SEWING



LABELLING THE COMPLETED PRODUCTION TROUSER PATTERN



PREPARING TO OVERLOCK PRODUCTION TROUSERS

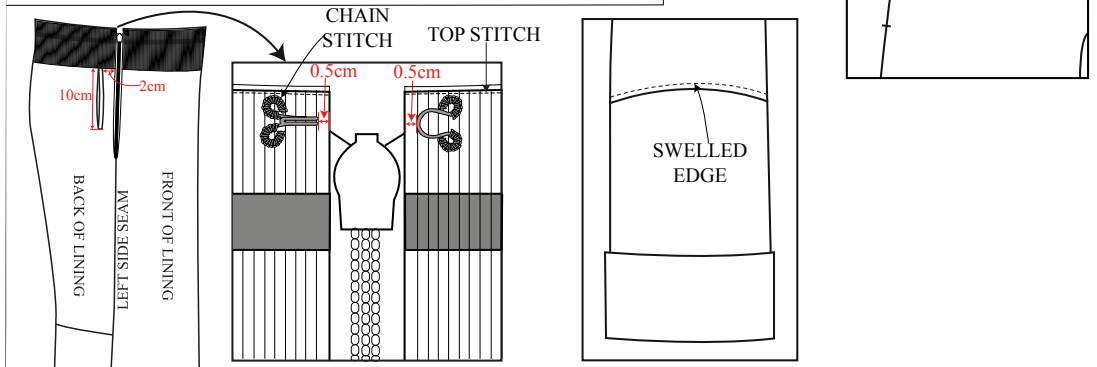
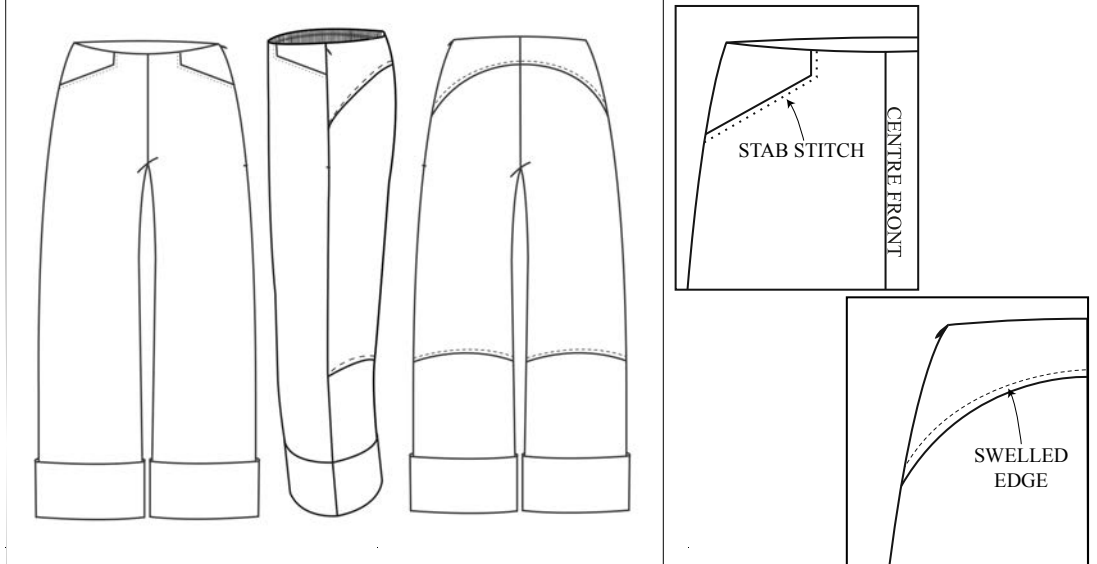


Student's learning journal record of prototype trouser development- pattern 2ND fitting



TROUSER MAKING SPECIFICATION

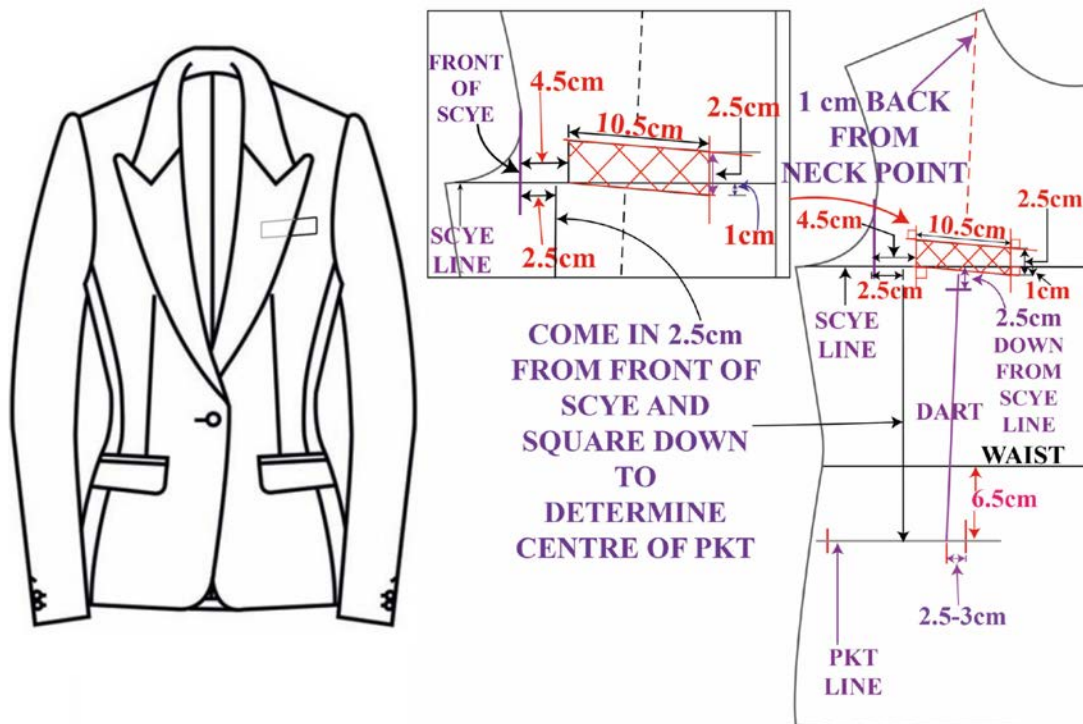
NUMBER: 11	SEASON: A/W 17/18	THEME: FRENCH BAROQUE	MODEL: SIZE 10
DESCRIPTION: CALF LENGTH HIPSTER TROUSERS WITH PERMANENT TURN UPS			



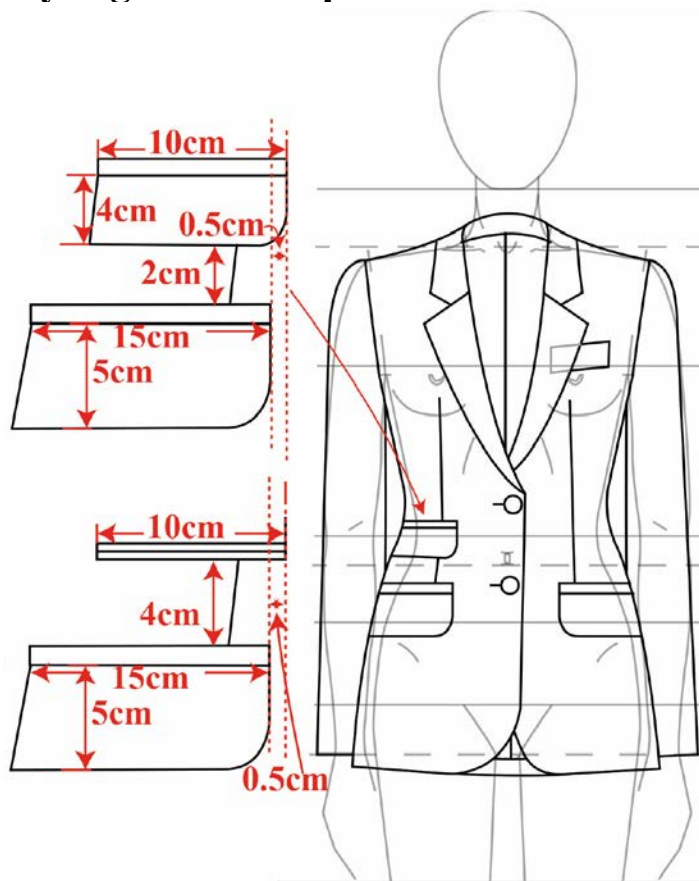
FABRIC SPECIAL HANDLING INSTRUCTIONS: STAB STITCHED ALL LEG SEAM TO ENSURE FLAT SEAMS. FULLY LINE TROUSERS AS THE BROCADE IS VERY ROUGH TO THE SKIN.
BOUND HEN AND CHAIN STITCH TO LEG SEAMS.
ATTACH HANGING LOOP AT SIDE SEAM AND AT 2CM IN FROM SIDE BACK.

FABRIC SWATCHES	LINING SWATCHES

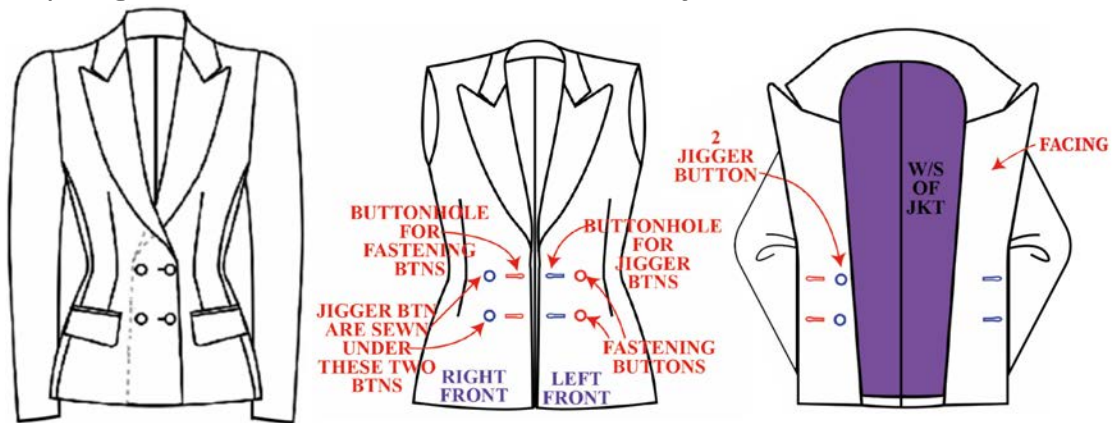
Determining the position of the out-breast and cross pocket



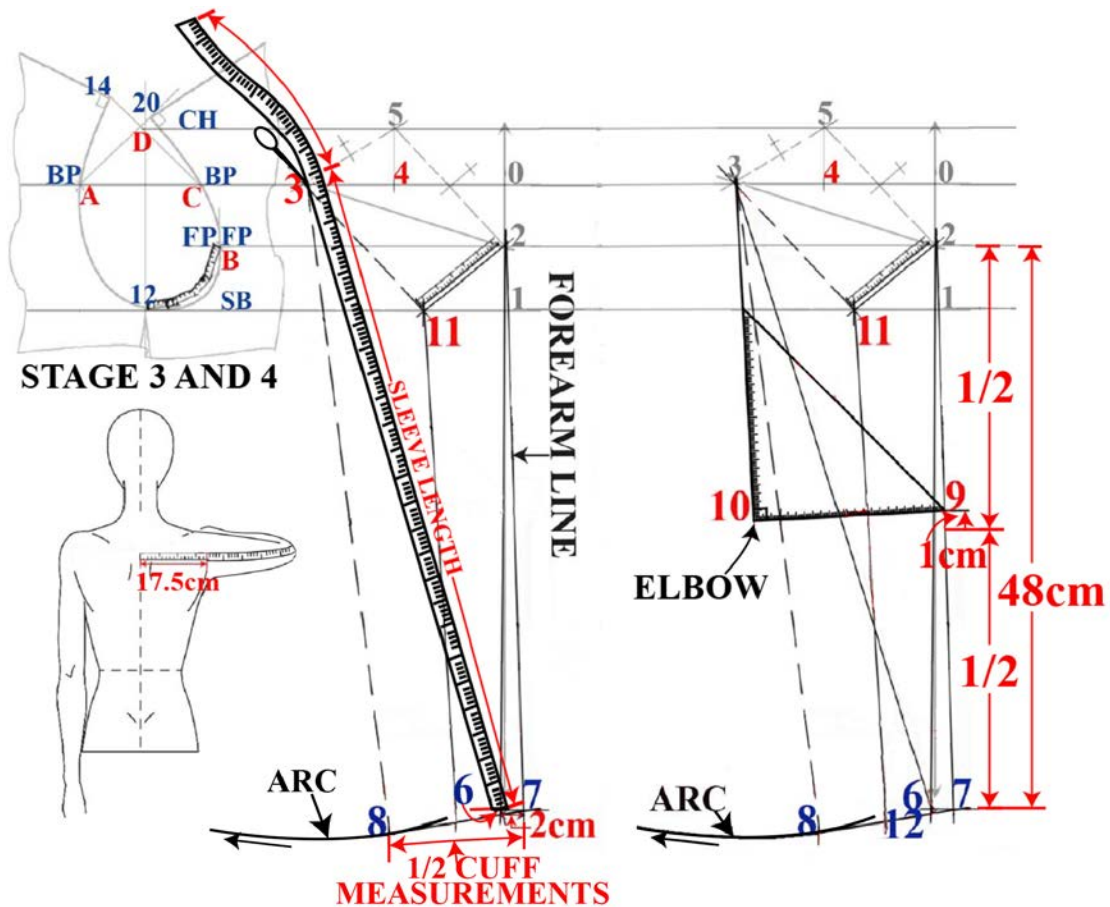
Styling the ticket pocket on the ladies' jacket



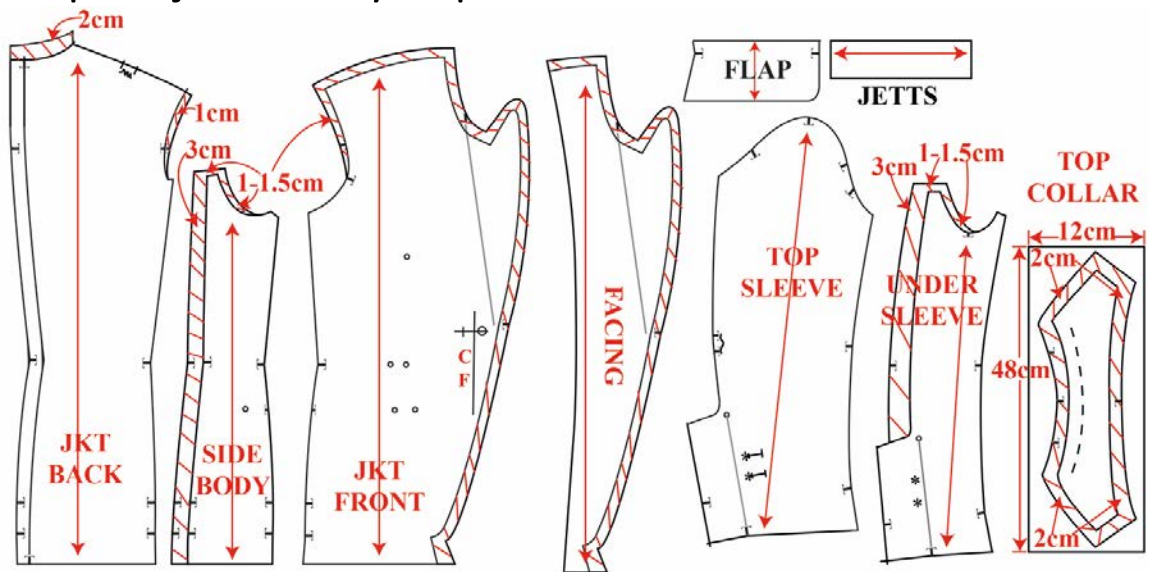
Styling the ladies' double-breasted jacket



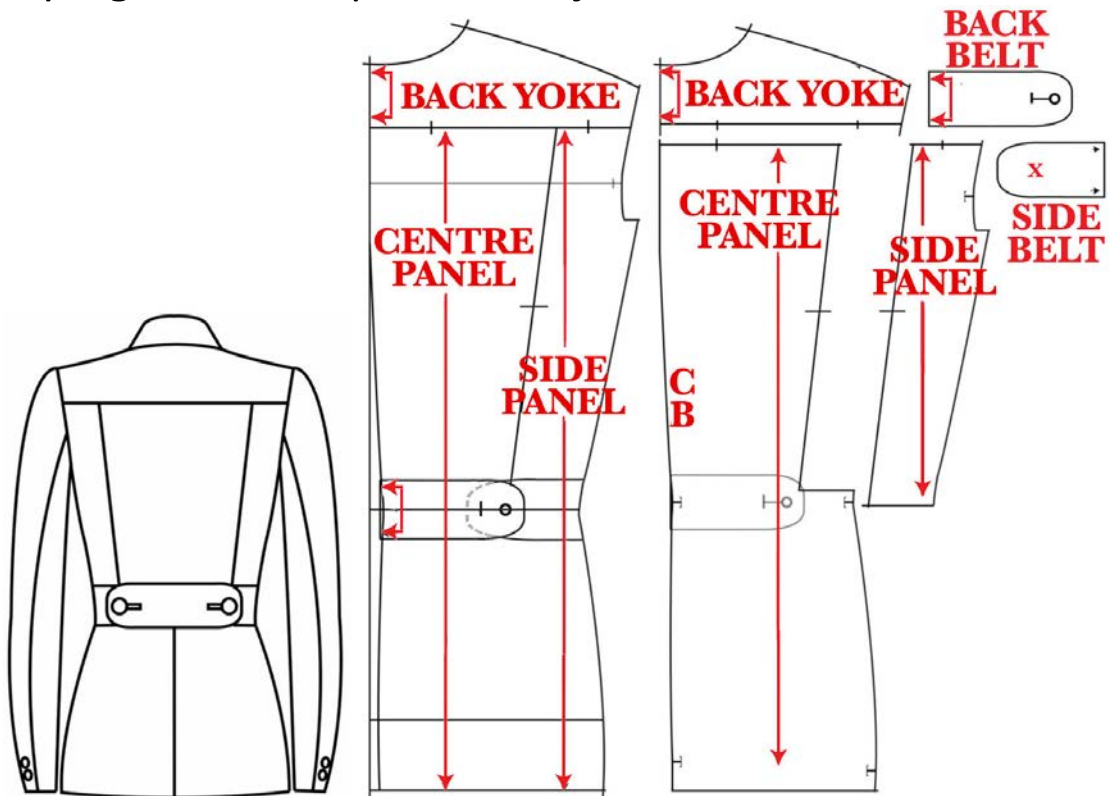
DRAFTING THE LADIES' JACKET SLEEVE BLOCK



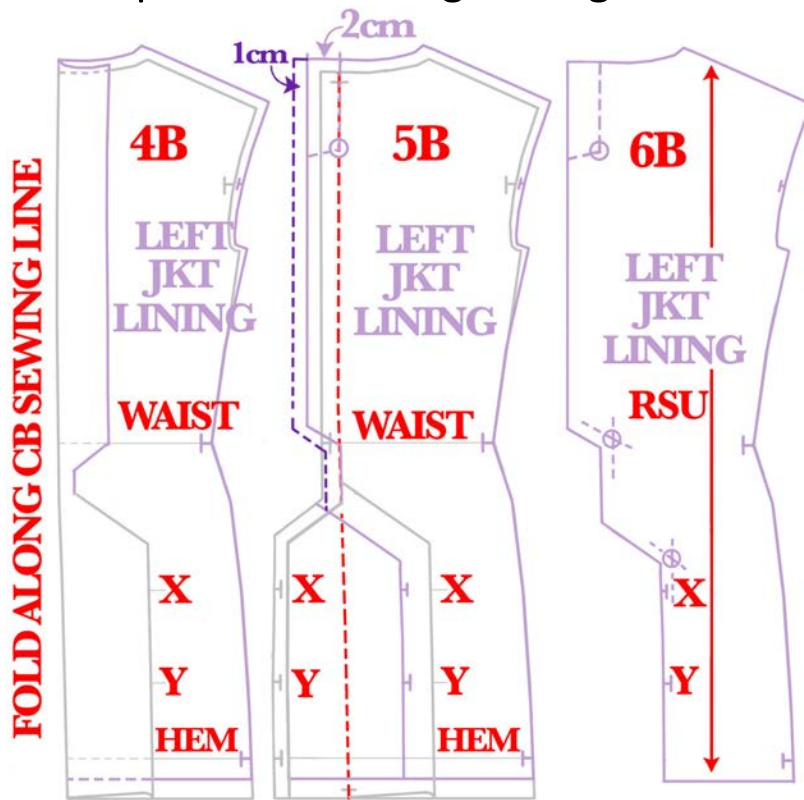
Bespoke jacket inlay required for the cut fabric



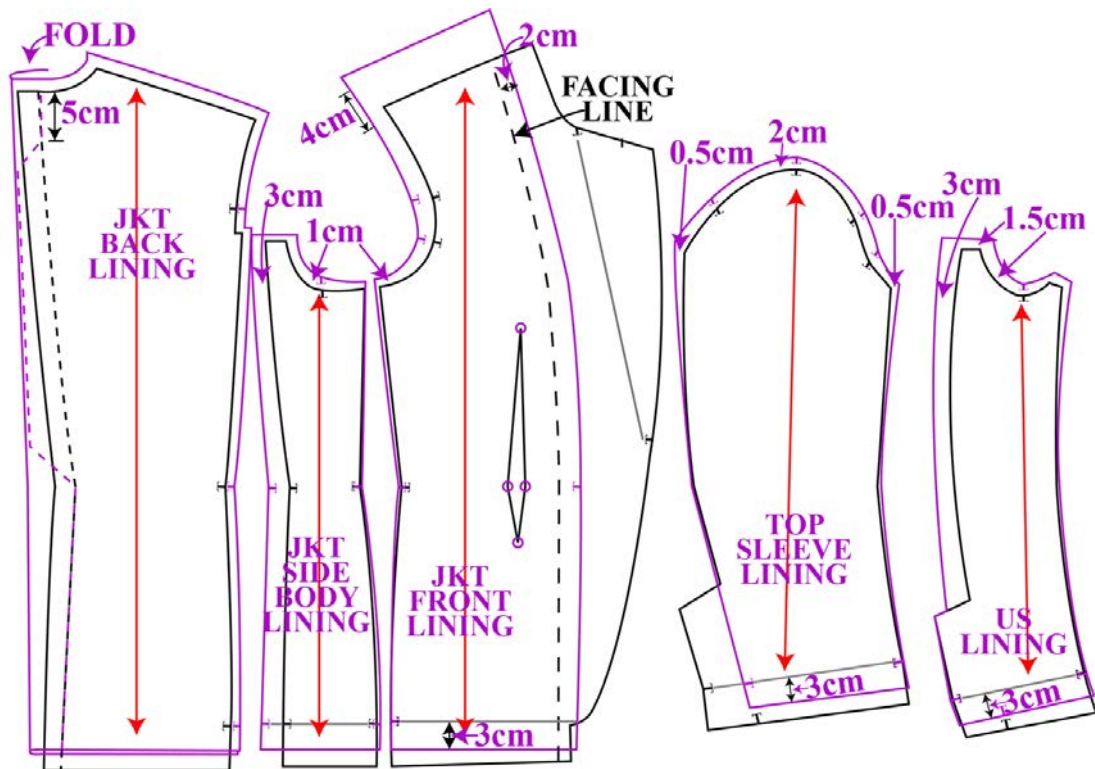
Styling the ladies' production jacket back



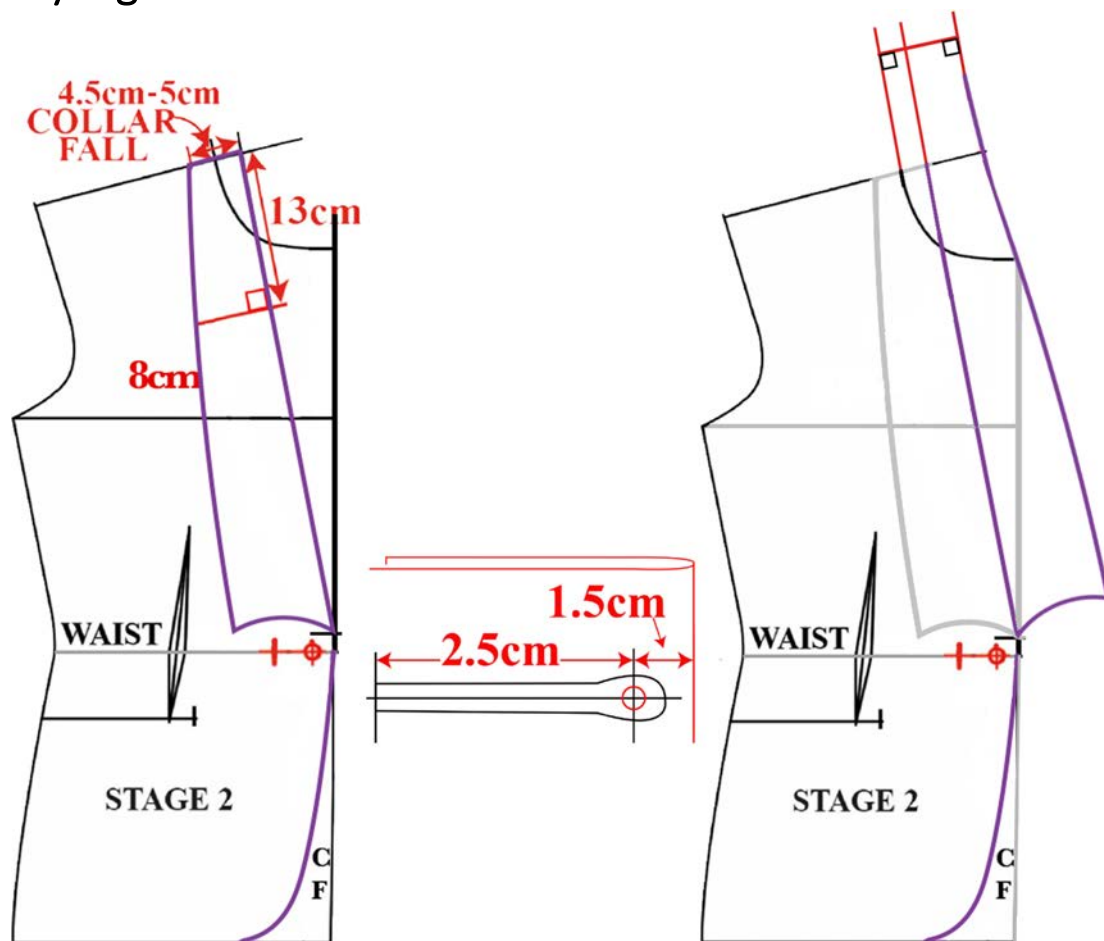
Jacket production lining cutting



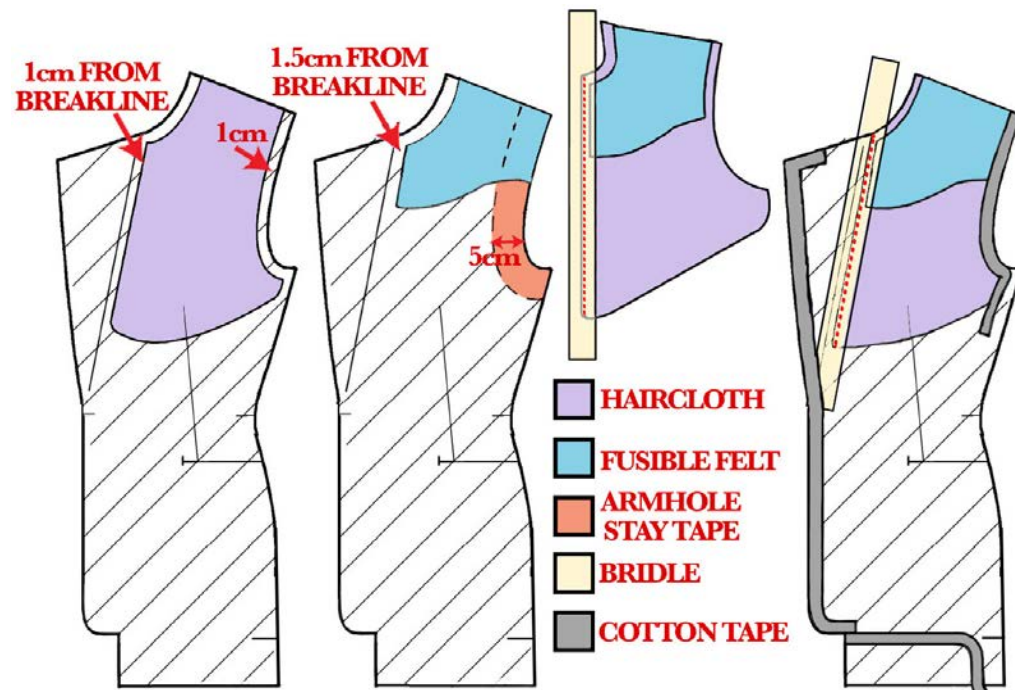
Bespoke jacket lining generated from the cut fabric



Styling the shawl collar



Production jacket interlining

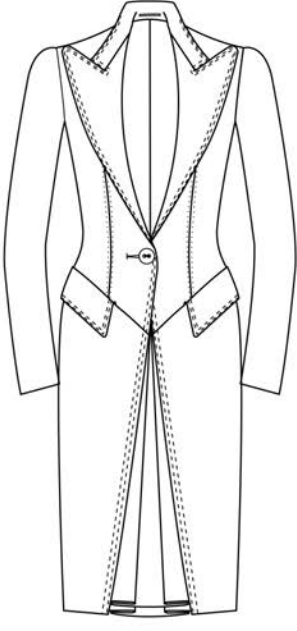

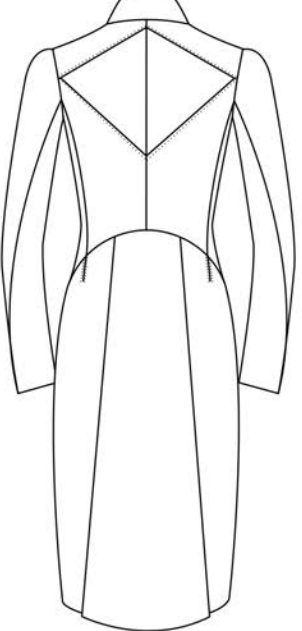
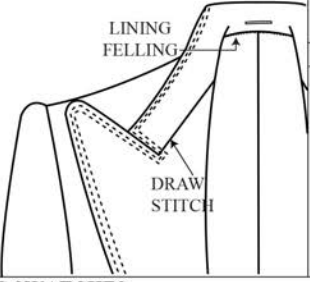
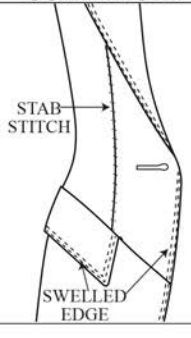
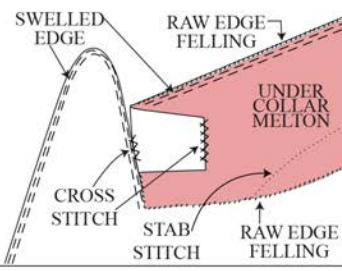



PROFESSIONAL COAT SKETCH WRITING AND INTERPRETATION

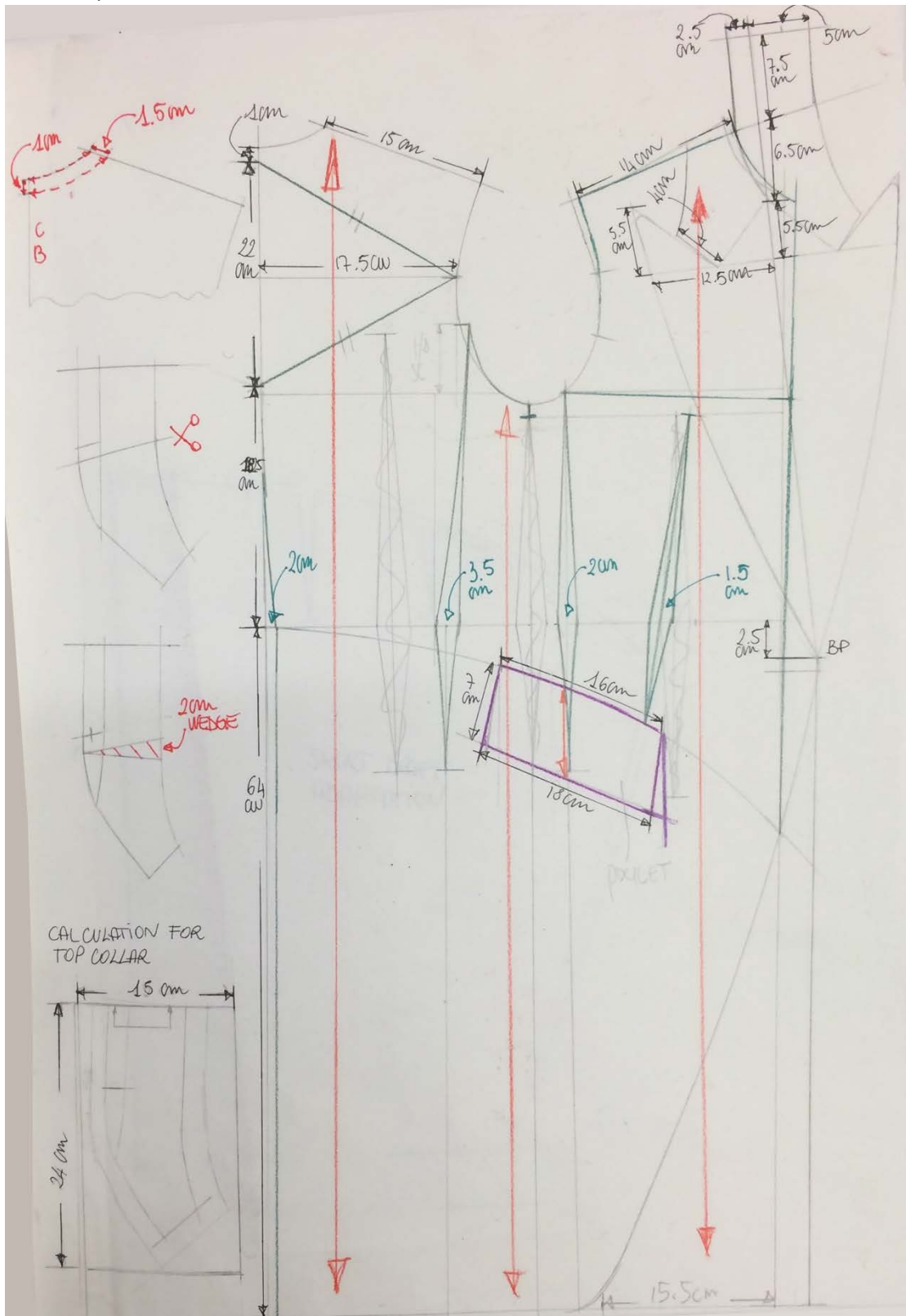
COAT WORKING SPECIFICATION-1

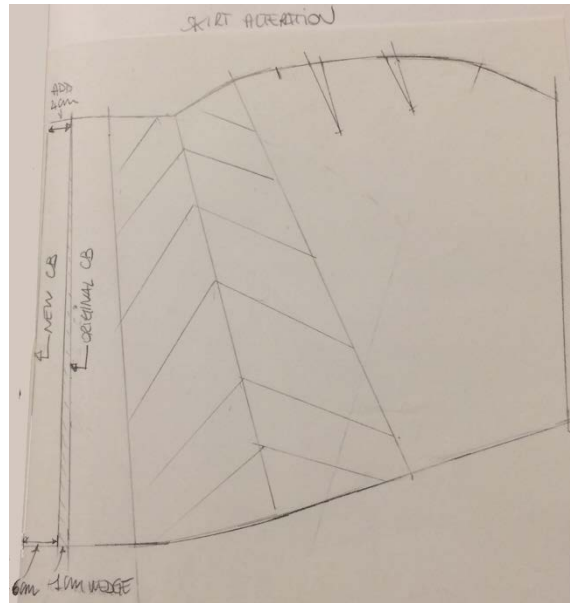
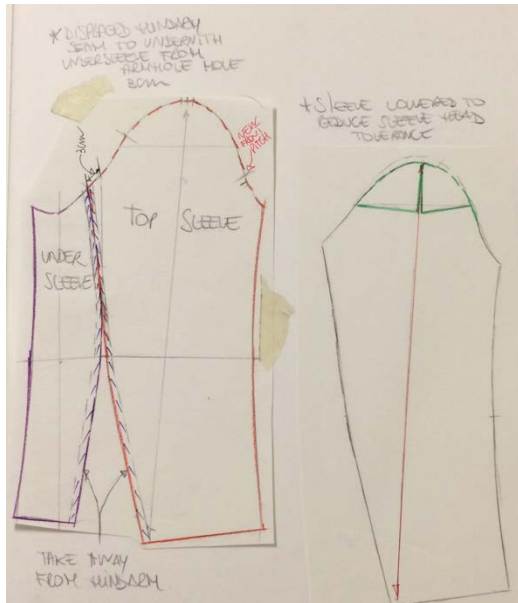
NUMBER: 11	SEASON: A/W 17/18	THEME: FRENCH BAROQUE	MODEL: SIZE 10
DESCRIPTION: FROCK COAT INSPIRED JACKET WITH PEAK LAPEL AND CB PLEAT			
FRONT VIEW	POCKETS AND DARTS	BACK VIEW	
COLLAR AND LAPEL	SLEEVE CUFF DETAILS		
FABRIC SWATCHES		LINING SWATCHES	

COAT MAKING SPECIFICATION

NUMBER: 11	SEASON: A/W 17/18	THEME: FRENCH BAROQUE	MODEL: SIZE 10
DESCRIPTION: FROCK COAT INSPIRED JACKET WITH PEAK LAPEL AND CB PLEAT			
FRONT VIEW	COAT BACK	BACK VIEW	
			
LAPEL	COAT FRONT	UNDER COLLAR AND LAPEL	
			
 BUTTON SEWN WITH A SHANK			
FABRIC SWATCHES		LINING SWATCHES	

EXTRACT FROM STUDENT LEARNING JOURNAL SHOWING COAT DRAFT, FITTING AND ADAPTATION





ALTERATIONS:

* PLEAT IS TOO NARROW \Rightarrow ① ADD 2cm AT TOP OF PLEAT AND 7cm AT BOTTOM TO GIVE THE SAME AVERAGE

* ADD THE POCKET FLAP \Rightarrow ② AS THE SEAM WHERE TO INSERT THE POCKET IS SHAPED, DRAW THE POCKET ON THE TOILE TO PERFECTLY FIT THE SHAPE.

COAT FITTING



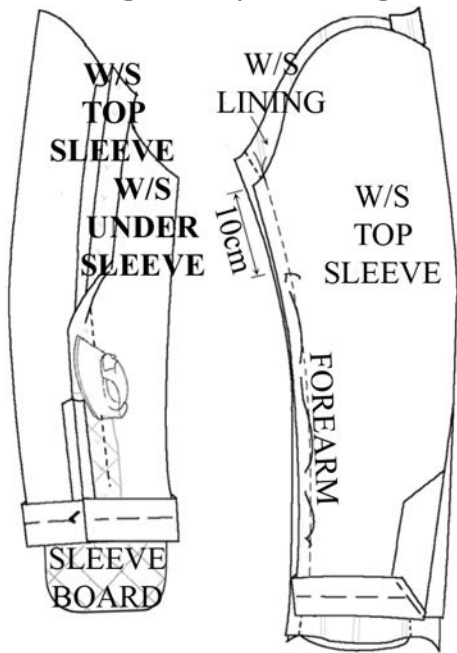
* THE WAIST IS WIDER AT FRONT
 ↳ LOWER THE SHOULDER BY 2cm.

* HINDQUARTER IS TOO BIG
 ↳ TAKE AWAY 1cm FROM HINDQUARTER

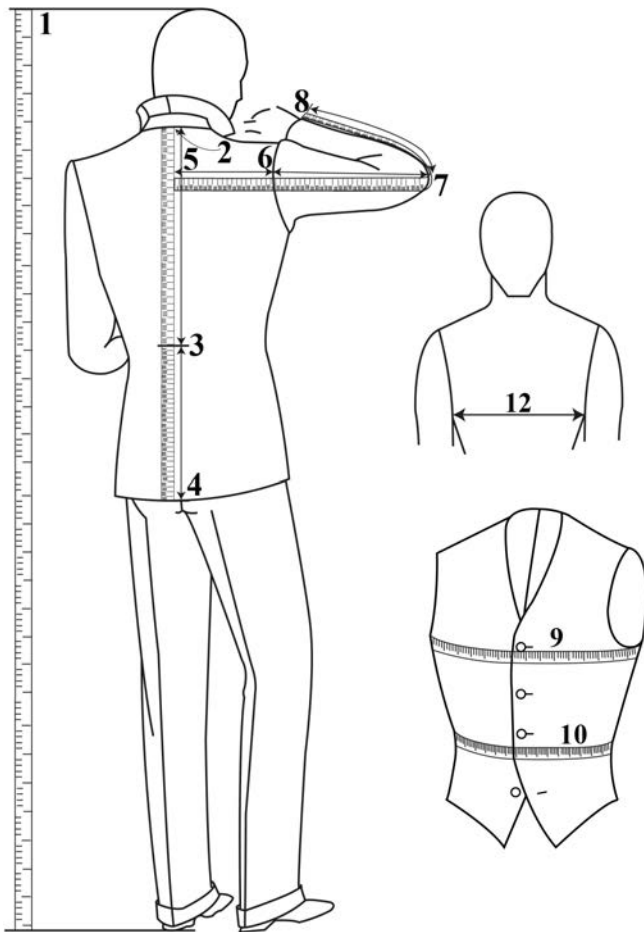
* SLEEVE CROWN IS TOO FULL
 ↳ REDUCE THE OVERLAP AMOUNT BY 2cm AS THE FABRIC IN USE WON'T STRETCH

* RE-PITCH THE SLEEVE 1cm UP, LOWER SHOULDER BY 2cm USING INLAY AT SHOULDER.

Sewing and pressing the sleeves



JACKET MEASUREMENT TAKING SEQUENCE



GALLERY OF STUDENT'S WORK

MENSWEAR

ROSS PAUL KEENAN – LINE UP (EAST LONDON UNIVERSITY), PUT TOGETHER AT THE SCHOOL.



WOMENSWEAR

WES GORDON'S FINAL COLLECTION 2009
(CENTRAL SAINT MARTINS) PUT TOGETHER AT THE
SCHOOL



JUDY JUNG'S COLLECTION INSPIRED BY JODPHURS



DEUS AUTEM EST IN FIDE



London School of Tailoring
24A Battersea Business Centre
99-109 Lavender Hill
London SW11 5QL

Contact: Sandra on mobile: +44 (0) 7393 677 758

Landline: +44 (0) 203 627 8754

Email: admin@londonschooloftailoring.co.uk

Email: Sandra.k@londonschooloftailoring.co.uk

Website: <http://londonschooloftailoring.co.uk/>